



Rural Firefighters Delivering Agricultural Safety and Health (RF-DASH)

SUCCESS STORIES



THE PROBLEM

People who work in agriculture are **5 times more likely** to die on the job than the average U.S. worker. Inadequate numbers of safety consultants exist to help farmers and ranchers address the unique risks they face in their work.

Farmers and first responders unite to improve farm safety and prevent agricultural incidents in rural communities.



OUR RESPONSE

Firefighters are trusted leaders in rural and agricultural communities. Strong partnerships between firefighters and farmers can help prevent emergencies, protect farm families, and create safer communities.

TRAINING CURRICULUM

RF-DASH uses a train-the-trainer approach with a curriculum that aligns with many National Fire Protection Association (NFPA) standards.

The five-part training covers:

- 1. Introduction to Agricultural Emergencies**
Causes of common farm emergencies and strategies to improve responses.
- 2. Preplanning and Mapping Farms**
Preplanning and mapping farms to improve emergency response times using the free, online, mobile-friendly tool, Farm-MAPPER.
- 3. Farm Hazard Analysis**
Common hazards found on farms and how to correct them and reduce the risk of injury on farms using Safer Farm.
- 4. Farm First Aid**
How to manage a victim injured in a farm incident while emergency services are en route to the scene.
- 5. Approaching the Farm**
Reaching out and approaching the farming community to implement the RF-DASH program on their area's operations.



Help Us Help Ourselves and Your Farm

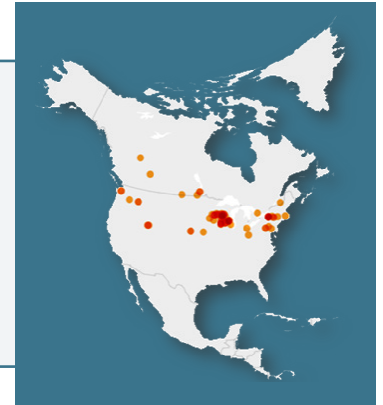
Join your local firefighters/EMS, and we can be a resource for your farm. The RF-DASH program utilizes existing networks of firefighters/EMS in order to provide emergency responses to local farms and ranches as well as provide brief farm safety consultations. These consultations are designed to improve farm safety and reduce the number of farm emergencies.

Photo credit: Dan Rogerson, Green Dakota, LLC

AMERICA'S TWO MOST ADMIRABLE PROFESSIONS SEPARATE NO MORE

RF-DASH HIGHLIGHTS

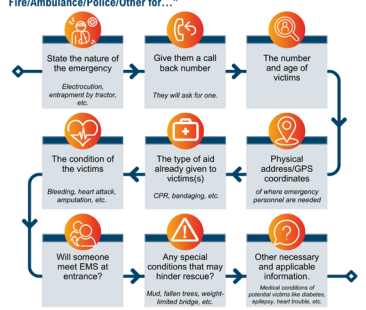
- Over 150 firefighters/EMS have been trained as trainers in the program from several U.S. states and Canadian provinces. They have gone on to educate over 2,500 agricultural safety and health professionals, educators, community members and farmers.
- The media has picked up on the success of this program, with articles in key agricultural outlets.
- RF-DASH is working with representatives from the US Fire Administration, National Volunteer Fire Council, and National Center for Farmworker Health to help rural communities prepare for agricultural hazards and bridge gaps in current emergency preparedness planning.



Tips for Farmers when Calling Emergency Dispatch (911)

What to say & include when talking to dispatch:

"Hi, my name is [state your full name (first and last)] I need Fire/Ambulance/Police/Other for..."



"If it is a fire emergency, provide the location and type of source water such as a pond, canal, or hydrant. Make sure to provide specific miles and road names and mention visible landmarks."

- If needed, enable the speaker feature on your phone.
- Do not hang up the phone until the dispatcher tells you to!
- Follow any instructions given by dispatch!



EMERGENCY PREPAREDNESS RESOURCES FOR FIREFIGHTERS AND FARMERS

The RF-DASH team has developed several emergency preparedness and outreach materials that fire departments can distribute to farms in their area to raise awareness and build relationships with the agricultural community. These materials include:

- Farm/Ranch Emergency Information Sheet
- Tips for Calling 9-1-1 on Farms & Ranches
- Manure Gas Warning Sticker
- Manure Gas Fire Department Sticker

Community Participants Say...



"The opportunity to help the people who do so much for our communities is something we would never say 'no' to. We were glad to learn ways we could be safer here, just by hosting the group on the farm."

- Paul and Barb Liebenstein
Wolf Creek Dairy

SAFER FARMS BUILD SAFER COMMUNITIES

Learn More At
www.rfdash.org