



Protecting the People who Feed America

Invest in Your Health for Ag College Students

Carolyn Sheridan RN,BSN
Clinical Director
AgriSafe Network



AgriSafe Network's Mission

- The Mission of the Network is to support a growing network of trained agricultural health and safety professionals that assure access to preventive service for farm and ranch families and the agricultural community.



Growing our Mission

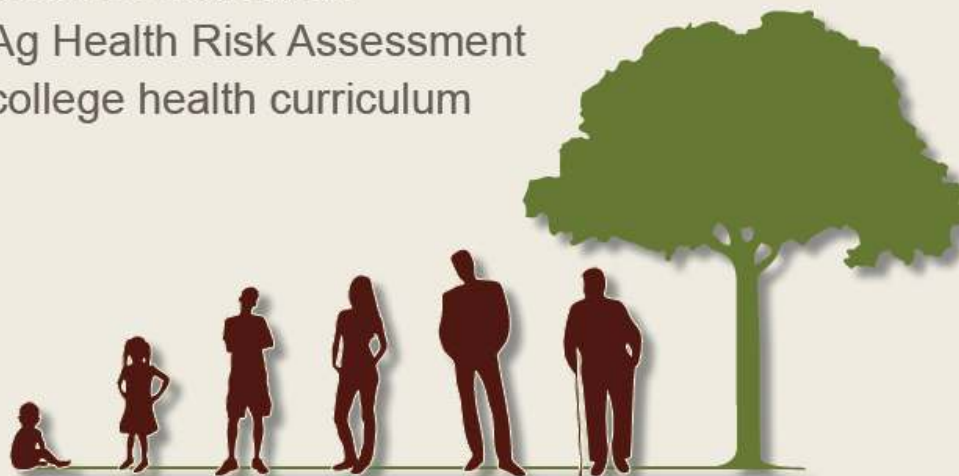
Local, State, National , International



Impact

AgriSafe shifts the quality of health care towards an occupational approach so that farmers can receive the same occupational health care afforded to other industries. Core components of AgriSafe's innovative occupational health initiatives are:

- clinical resources
- advanced training programs
- outreach services
- distance education
- Ag Health Risk Assessment
- college health curriculum



Continuum of Life

Agricultural Health and Safety Impact





Ag College Program History

- Initiated in Iowa in 1995
- Spencer Hospital AgriSafe Program for Freshman Ag Students from 2 year Community College
- Health and Safety Education Program including screenings and PPE
- Cost \$ (\$125 per Student)
- Added to tuition as a student lab fee





Invest In Your Health:

AgriSafe Ag College Prevention Program

- Our goal is to empower Ag college students to recognize agricultural **health** and safety risks, and become their own health advocates.
 - Educate
 - Prevent
 - Protect
 - Sustain
- Our goal to expand statewide, nationally and internationally
 - Flexible
 - Adapt to existing curriculums



Partnership

- CHS provides direct funding and strategic planning





Partnership

- 3M provides products and technical support



Commitment

- CHS and 3M have a strong commitment to Stewardship
- Both CHS and 3M contribute through innovation and action not just funding.

Young Adult

Age 19-35

Risks

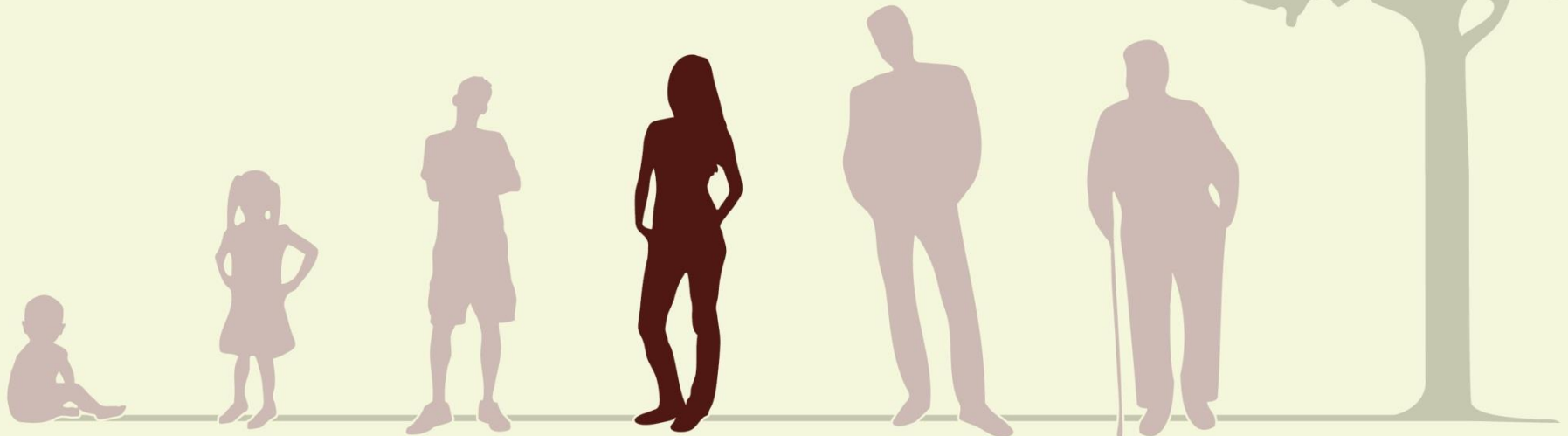
- Tractors, Machinery
- Respiratory Hazards
- Chemicals
- Livestock
- Grain
- Sun Exposure
- Economic stress
- Lack of affordable health care
- Exposures from non-farm job

Current AgriSafe Programs

- AgriSafe media connections (radio, TV, print)
- Baseline AgriSafe Health screenings
- Partnership with Community Ag Colleges
- Ag Health and Safety Education
- On Farm Safety Review
- Ag Health and Safety Education for Health Professionals; Webinars
- Selection of PPE
- Mental health screening
- Advocacy for comprehensive health coverage

Behaviors

- Lack of experience
- Works alone
- Long work hours
- Sense of immortality
- Independent
- Self reliance for safety



Agricultural Health and Safety Impact

Priorities



Program Details

- Baseline Survey
- Health Screenings-by AgriSafe Health Professionals
 - Blood pressure
 - BMI
 - Hearing





Highlights of Baseline Survey

- 70% male 30% female
- 47 % started helping on the farm between the ages of 5 to 8
- 91 % of students were performing farm tasks before the age of 14.
- 46 % have experienced respiratory symptoms related to
- agricultural exposures
- 75% never or only sometimes wear a respirator in a
- dusty environment
- 82% experience ringing in ears yet only 16% state they always wear hearing protection.

Program Details

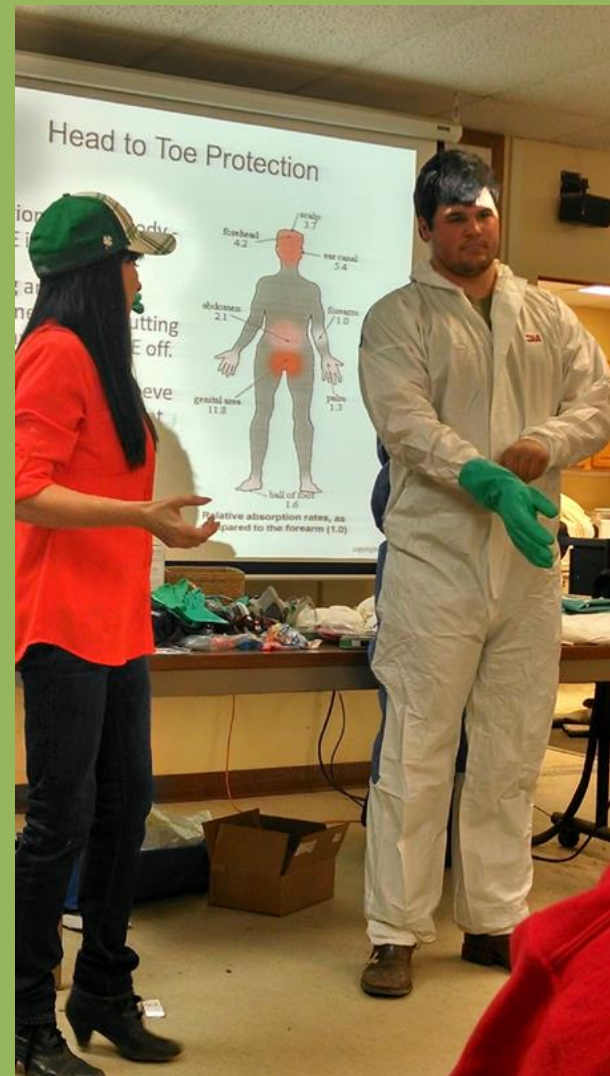
- Education
 - Power point presentation addressing agricultural hazards, prevention, use of PPE.
 - Education packet
 - Online Resources
- Start Up PPE Kit
 - 3M Personal Protective Equipment Packet
- Respirator Fit Test

General Health and Wellness

- Discussion of importance of general health wellness based on age
- Health screenings



Interactive



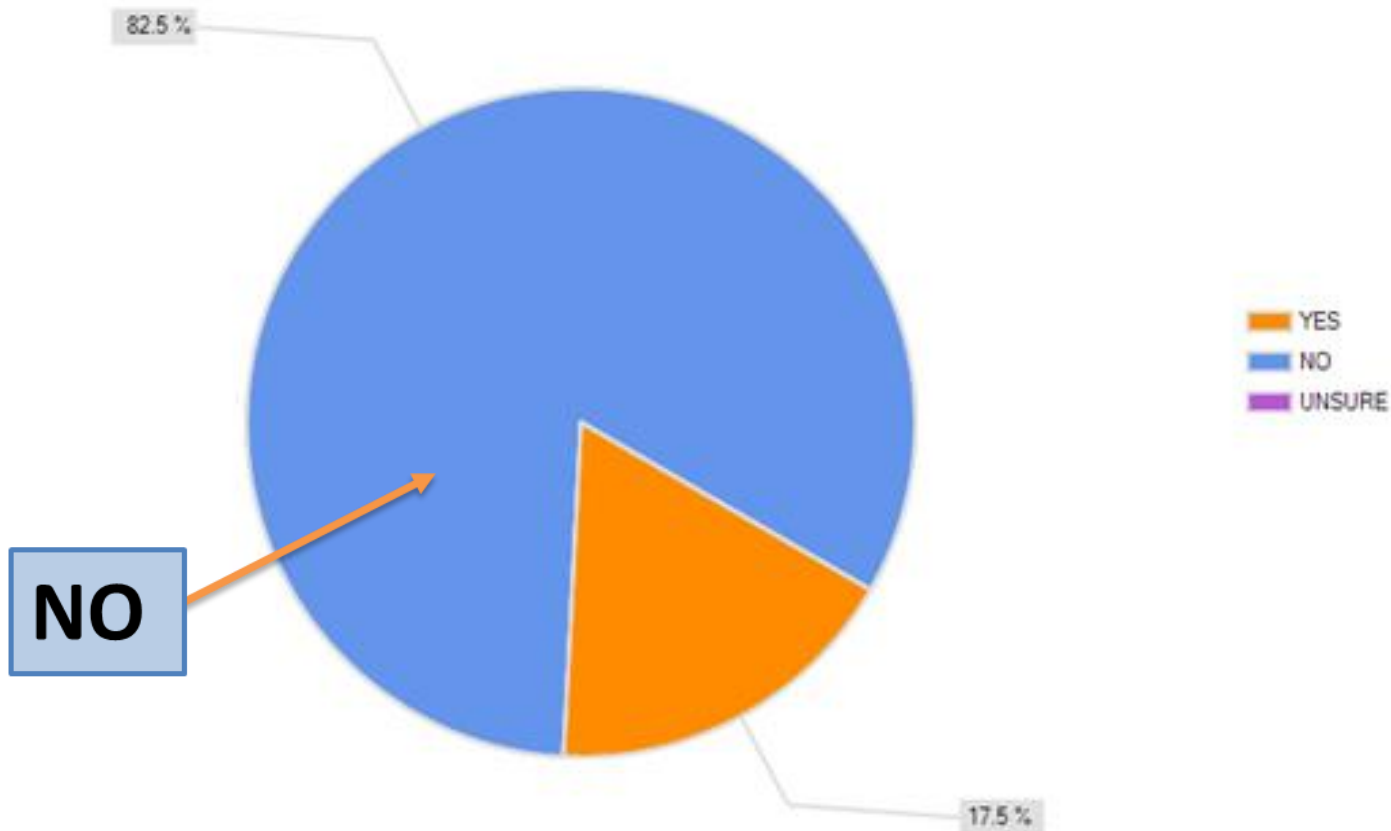


Engagement



Health Care Provider Role

Has your doctor or other healthcare provider discussed farm related health or safety injuries or illness with you?



PPE

Head to Toe Protection

- TyVek coverall
- Gloves (18 mil and 4ml disposable)
- Safety glasses
- Hearing plugs
- Foot protection
- 2 strap filtering face pieces (8511, 8271)
- Canister respirator face piece
- P100 pancake filters or cartridges



Online Resources

College Health Tab

Safety Store



[Become A Member](#)

[Member Login](#)

Search our site...



[College Health »](#)

[Safety Store](#)

[Ag Producer Resources »](#)

[Training »](#)

[Professional Resources »](#)

[Become a Member »](#)

College Health

Invest in Your Health AgriSafe Ag College Prevention Program

AgriSafe Network collaborates with two and four year agricultural colleges to provide AgriSafe occupational health and educational services designed for college Ag students. Our goal is to empower students to recognize agricultural health and safety risks and become their own health advocates.



College Health

[Student Resources](#)
[Student Membership](#)
[Contact Us](#)

Upcoming Events

[Safety Policy Development for School-based Agricultural Education Programs: The Navajo Nation and High School Ag Ed Teachers](#)
Thu Jun 11, 2015 12:00 PM

[Prevention of Heat Related Illnesses to Agriculture](#)
Wed Jun 17, 2015 12:00 PM

[Hearing Program Adapted to Agriculture](#)
Wed Jul 22, 2015 12:00 PM

AgriSafe Members



Educate

Increasing knowledge to Improve
Health & Safety



Protect

Empowering to Invest Now for
Healthy Living in the Future



Prevent

Selecting Safety Equipment that Protects from Head to Toe



Sustain

Assuring Access to Best Practices & Safety Standards

Agricultural Respirator Selection Guide

Use Only NIOSH Approved Respirators

Two Strap Air Purifying Respirators



Half Mask Air Purifying Respirators



Other Types of Respiratory Protection



Disclaimer: This publication is provided with the understanding that neither the publisher nor any author, editor, or contributor to this publication warrants that the information contained herein is accurate or complete and disclaims responsibility for any adverse effects resulting directly or indirectly from the information presented, from any uncalibrated device, or for the reader's misinterpretation or misapplication of the text.

Alarms (or Respirators) Hazards may result from either an oxygen deficient atmosphere or breathing air contaminated with toxic particles, vapors, gases, fumes or mists. The proper selection and use of a respirator depend upon an initial interpretation of the concentration of the hazard or hazards present in the workplace, or the presence of an oxygen deficient atmosphere.



Impact

- 79% have not worn a canister type respirator prior to the program.
- Following the educational presentation and demonstration - when given the option 80% of students voluntarily chose to receive a canister respirator.
- Reported reduction of symptoms
- Students returning to purchase PPE
- Family members of students seeking AgriSafe services and PPE
- Program accepted as part of course work



Student Responses

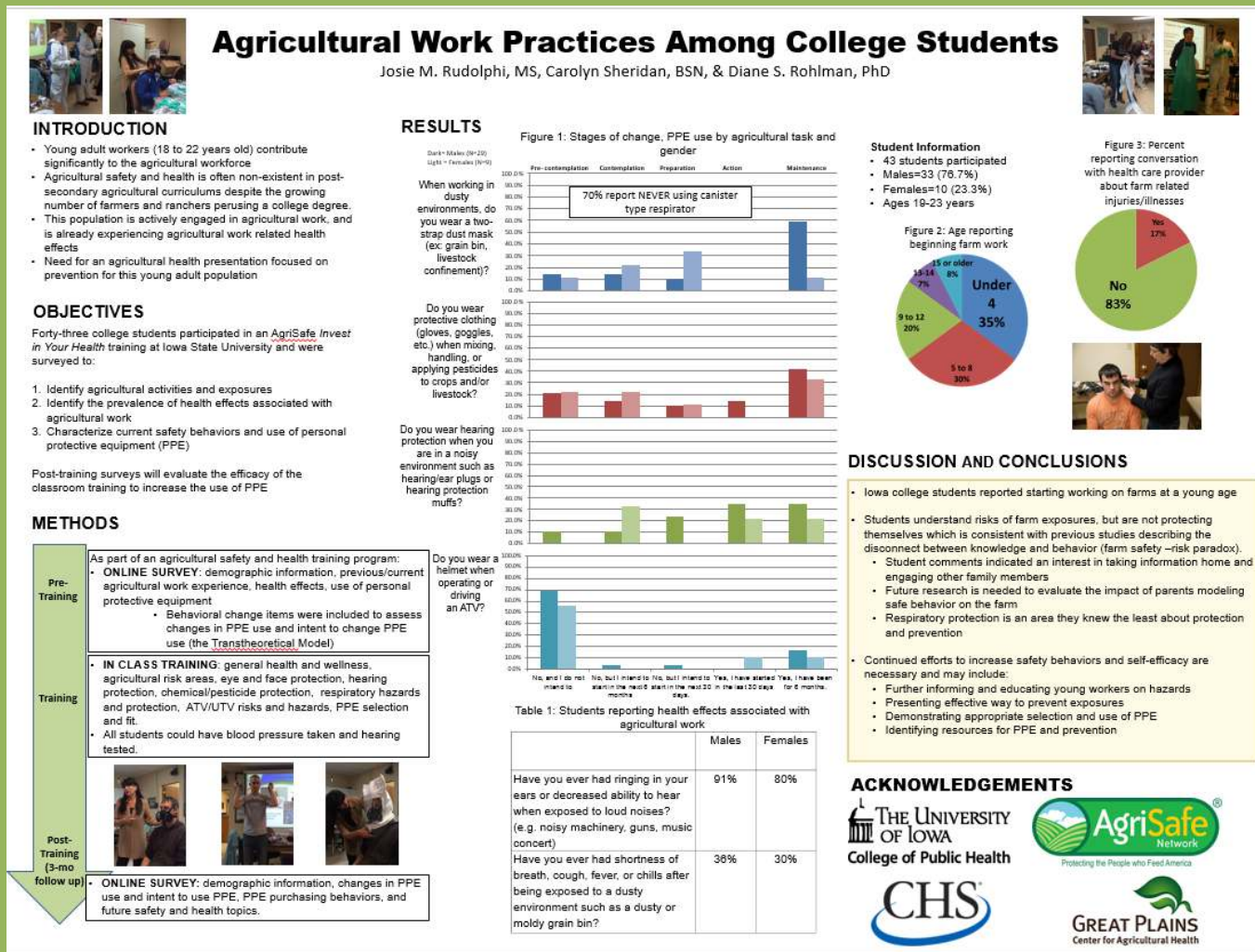
“You told me if I wore this mask that I would stop coughing when I was in the hog barn. I have stopped and feel better. How can I get one of these for my father?”

“By finding out all the common dangers of farming from loss of hearing, respiratory problems, and eye injuries I know now that safety has to come first.”

“We would like to invite some local farmers to our next class- can we do that?”

Partnership

- Great Plains Center assists with program evaluation



ACKNOWLEDGEMENTS

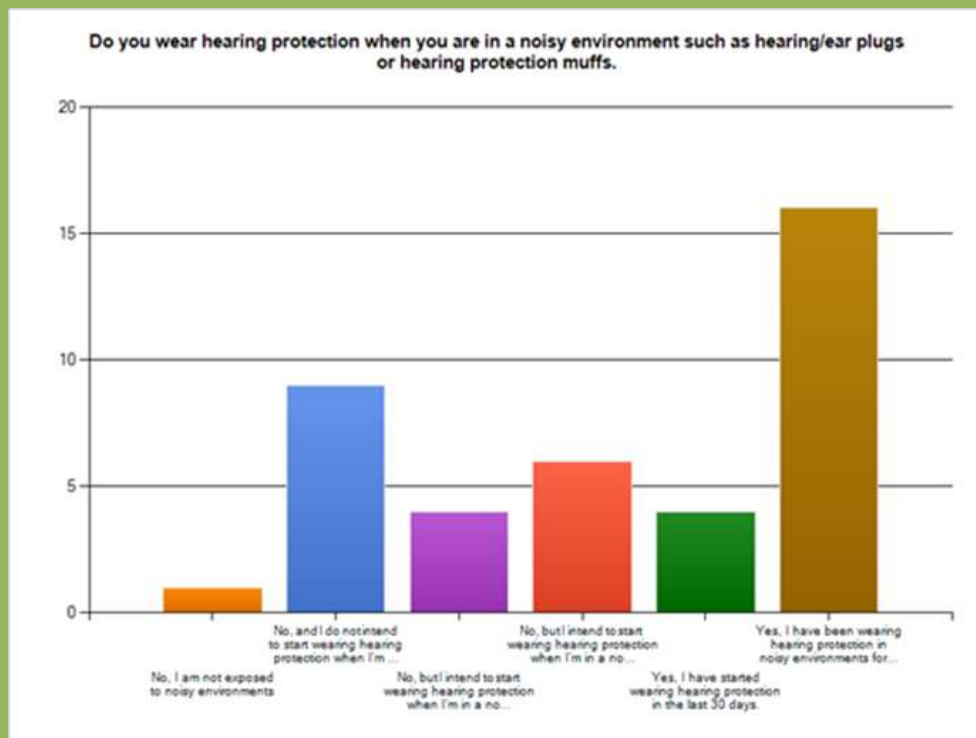
THE UNIVERSITY OF IOWA
College of Public Health



Stages of Change

	Males	Females
Have you ever had ringing in your ears or decreased ability to hear when exposed to loud noises? (e.g. noisy machinery, guns, music concert)	91%	80%
Have you ever had shortness of breath, cough, fever, or chills after being exposed to a dusty environment such as a dusty or moldy grain bin?	36%	30%

Students reporting health effects associated with agricultural work





Evaluation

- Partnership with faculty and students at the Great Plains Center
 - Development of pre and post test evaluation material
 - Data analysis and interpretation
 - Expand curriculum to develop effective health and safety information for this unique group of you ag workers



Evaluation

- Iowa college students reported starting working on farms at a young age
- Students understand risks of farm exposures, but are not protecting themselves which is consistent with previous studies describing the disconnect between knowledge and behavior (farm safety –risk paradox).
 - Student comments indicated an interest in taking information home and engaging other family members
 - Future research is needed to evaluate the impact of parents modeling safe behavior on the farm
 - Respiratory protection is an area they knew the least about protection and prevention
- Continued efforts to increase safety behaviors and self-efficacy are necessary and may include:
 - Further informing and educating young workers on hazards
 - Presenting effective way to prevent exposures
 - Demonstrating appropriate selection and use of PPE
 - Identifying resources for PPE and prevention



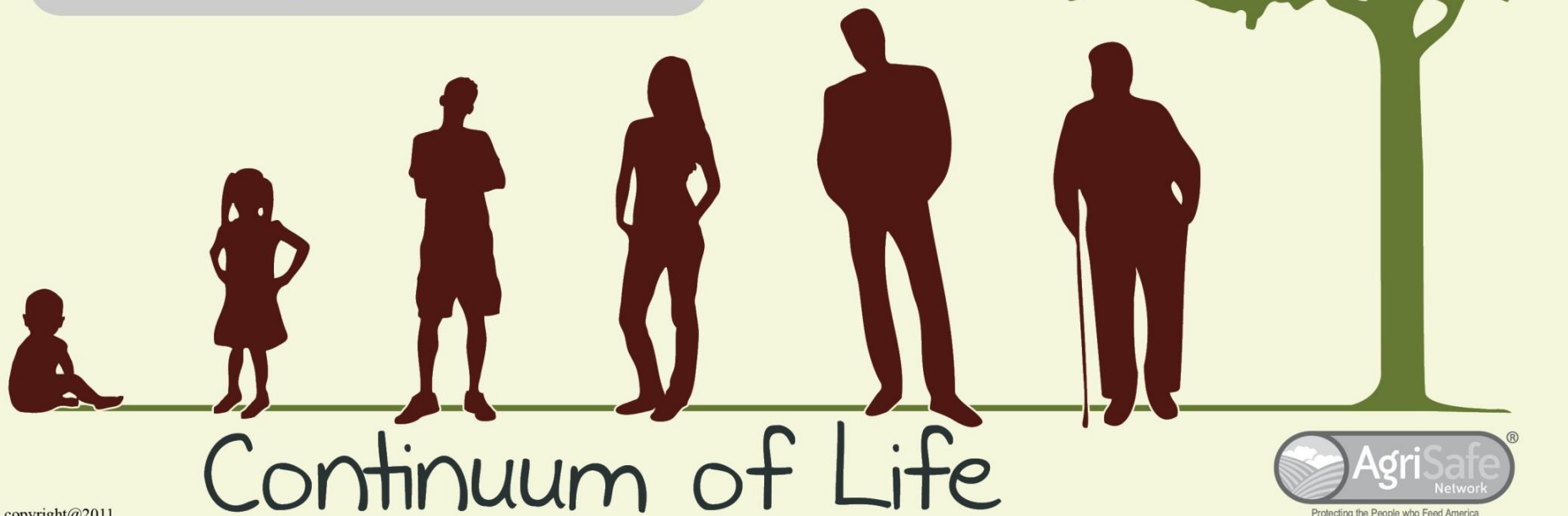
Future Program Goals

- Program development
- Resource development
- Collaboration with new Ag colleges
- Collaboration with Nursing colleges
- Sustainable program in Ag colleges
- International Expansion
 - Canada

Agricultural Health and Safety Impact

Goal: develop and implement programs for each age group in the continuum of life.

- Identify Risks
- Identify Needs
- Develop programs
- Collaborate
- Partner
- Implement
- Evaluate





Contact Information

Carolyn Sheridan
Clinical Director
AgriSafe Network
Phone: (712) 363-4034
csheridan@agrisafe.org

Natalie Roy, MPH
Executive Director
AgriSafe Network
Phone: 985-845-1116
nroy@agrisafe.org

Kristina Dealecio
Project Services Coordinator
AgriSafe Network
Phone: (985) 400-8599
kdealecio@agrisafe.org

Charlotte Halverson BSN,COHN-S
Occupational Health Coordinator
AgriSafe Network
Phone: 563-557-0354
www.agrisafe.org