

# The **UMASH** Connection Farms and People

A newsletter of the Upper Midwest  
Agricultural Safety and Health Center

umash.umn.edu

Volume 8  
Fall 2014

Upper Midwest  
Agricultural Safety  
and Health Center  
1260 Mayo  
(Del Code 8807A)  
420 Delaware St SE  
Minneapolis, MN 55455  
612-625-8836  
umash@umn.edu



Like us on Facebook



US Ag Centers  
YouTube Channel

## ONE HEALTH IN AGRICULTURAL SAFETY AND HEALTH



UMASH embraces a One Health philosophy that recognizes connections between human, animal, and environmental health when addressing occupational health and safety issues in agriculture.

## MAKE SAFETY COUNT YEAR ROUND

### NATIONAL FARM SAFETY AND HEALTH WEEK

National Farm Safety and Health Week was September 21-27, 2014. This year's theme was *"Safety Counts - Protecting What Matters"*.

UMASH, along with the other nine US Agricultural Centers funded by the National Institute for Occupational Safety and Health (NIOSH), joined the National Education Center for Agricultural Safety (NECAS) to help raise awareness about the importance of agricultural health and safety. UMASH reached out to local and regional media with a press release and radio PSA to promote agricultural safety and health resources for farmers, their families and workers.

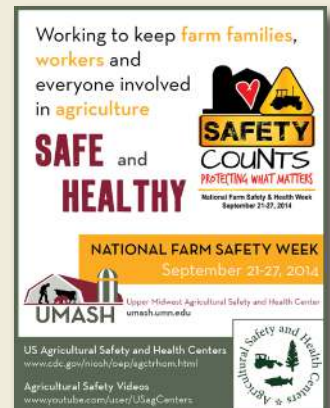
### SAFETY IS IMPORTANT YEAR ROUND.

Help us share this message and the resources with the farmers, workers, their families and everyone involved in agriculture.

The resources are available at [umash.umn.edu/nfsw](http://umash.umn.edu/nfsw)

## HIGHLIGHTS

|                     |   |
|---------------------|---|
| Make Safety Count   | 1 |
| In the Field        | 2 |
| Pilot Projects      | 3 |
| Upcoming Events     | 4 |
| Ag Safety Spotlight | 4 |



## STOCKMANSHIP TRAINING WORKSHOPS

UMASH researchers, Bruce Alexander and Jeff Bender, gave presentations on worker health and safety at three dairy Stockmanship training events this summer in Dundas and Melrose, Minnesota and in River Falls, Wisconsin.

### The training objectives were:

1. Dairy stockmanship focused on the interactions between humans and cows, and included low-stress handling techniques,
2. Animal welfare focused on the mechanisms for properly evaluating and caring for livestock; and,
3. Worker health and safety was emphasized as a priority for each component.



For more information on future stockmanship workshops, contact [umash@umn.edu](mailto:umash@umn.edu).

## UMASH AT THE MINNESOTA STATE FAIR



UMASH researchers took part in the new Driven to Discover research initiative at the Minnesota State Fair. UMASH invited state fair visitors to participate in a brief survey “What’s Behind Your Food?” to gather information about what they think about when making food purchasing choices for themselves and their family. About 250 people completed the survey at the fair.

The survey is being offered on-line on the UMASH website through October 31st. For more information about participating see link below.



**YOU ARE INVITED** to take the brief on-line survey to gather information about what people think about when making food purchasing choices for themselves or their family, including their knowledge about worker health and safety in agriculture.

- » The survey takes about 5 minutes or less.
- » You must be 18 years or older to participate in the survey.
- » The survey is available online through October 31st.

TAKE THE SURVEY ONLINE AT:

<https://redcap.ahc.umn.edu/surveys/?s=Bu7RIYnsBt>

## UMASH AT THE LATINO SUMMIT

The **Southern Minnesota Latino Summit** was held September 10, 2014 in Mankato, Minnesota. Four UMASH personnel attended: -- Jeff Bender, Carol Peterson, Karen Lopez, and Ruth Rasmussen. The event was convened by the University of Minnesota Extension, Chicano Latino Affairs Council, Consulado de Mexico en Saint Paul, Minnesota State University, and the Latin American Multi-Ethnic Association for Networking and Opportunities. Over 50 persons representing service providers and educational professionals met to create stronger working relationships amongst themselves and to identify strategic collaborations that could result in greater success in serving Latino communities. Energizing ideas were the result of the Pro-Action Cafe format for the day with themes emerging to move visions into practical activities. UMASH resources, particularly in Spanish, were well received and connections for continued engagement were made.



## NATIONAL FARM MEDICINE CENTER HOSTS OHIP INTERNS

This summer, the National Farm Medicine Center hosted two students as part of the Occupational Health Internship Program (OHIP). **Ivanna Pereyra**, Salisbury University, and **Taylor Arnold**, University of Memphis, worked primarily on *Seguridad en las Lecherias*, a project that is testing culturally appropriate occupational safety and health training for immigrant dairy workers.

*“This has been a wonderful opportunity to have fresh young minds among us who can offer new perspectives and can ask questions that don’t occur to us but have relevance to our work,”* said Matthew Keifer, MD, MPH, director of the National Farm Medicine Center, a program of Marshfield Clinic Research Foundation.



Taylor Arnold  
University of Memphis



Ivanna Pereyra  
Salisbury University

## UMASH PILOT PROJECTS PROGRAM

The UMASH Pilot Projects Program seeks to develop new initiatives in agricultural health and safety research, prevention and intervention, outreach and education, evaluation and translating research into practice.

Congratulations to the following 2014 pilot project awardees!



### 2014 UMASH PILOT PROJECTS

#### Occupational Safety and Health Curriculum Development and Training for Minnesota Agricultural Educators

Principal Investigator:

Megan L Roberts, Agribusiness Instructor, South Central College

With this pilot project grant, South Central College proposes to develop occupational safety and health (OSH) based curriculum to deliver to Minnesota agricultural educators that work with farm business management instruction, supervise high school students in agricultural workplaces, and/or coordinate college level agribusiness internships.

#### Epigenomic remodeling associated marks in bronchial epithelium upon exposure to *Aspergillus fumigatus* spores

Principal Investigator:

Dr. Sumali Pandey, PhD, Research Associate, University of North Dakota

Airborne exposures to fungi (molds) are common in agricultural settings. *Aspergillus fumigatus* spores are frequently detected in the agricultural environment. The results from this project are likely to be important while considering fungal-exposure assessment methods, and for making informed therapeutic and diagnostic decisions for mold-associated diseases.

#### Pilot project to assess bacterial exposure in workers spreading animal manure

Principal Investigators:

Peter Davies, College of Veterinary Medicine, University of Minnesota

Jose Hernandez, College of Food, Agricultural, and Natural Resource Sciences, University of Minnesota

This pilot study will evaluate the risk of colonization with *Staphylococcus aureus* (including MRSA) in people whose work involves spreading animal manure, a group that does not appear to have been previously studied with respect to risk of zoonotic pathogens.

#### Spheres of Influence: mapping and engaging the institutions that can influence agricultural safety and health

Principal Investigators:

Casper G. Bendixsen, PhD - National Farm Medicine Center

Matthew Keifer, MD, MPH - National Farm Medicine Center

This pilot project will develop an instrument that will both qualitatively assess and quantitatively measure the influence that agricultural lenders believe they exert on farmers and ranchers and vice-versa.

#### Worksite Screening for HTN, DM2 and HLD among Migrant Agricultural Workers

Principal Investigator:

Tamim Rajjo, MD, Migrant Health Services, Inc., Rochester MN

This pilot project will test the implementation of two methods for conducting on-site health-screening for chronic diseases among agricultural migrant workers on farms in Southeast Minnesota.

Learn more about current and past projects, and announcements for future calls for proposals at:

[http://umash.umn.edu/projects/pilot\\_projects.html](http://umash.umn.edu/projects/pilot_projects.html)

## ASHCA SAFETY GRANTS PROGRAM

Grants up to \$10,000 are being offered by a national coalition of agribusinesses, producer organizations and safety professionals in order to provide financial support for agricultural safety and health interventions at the local and/or regional level.

**APPLICATION DEADLINE: JANUARY 7, 2015**

Learn more and apply online at: [www.ashca.org/safety-grants-program/](http://www.ashca.org/safety-grants-program/)



# CONNECT WITH UMASH RESEARCHERS AT THESE UPCOMING EVENTS

## 7th International Symposium: Safety & Health in Agricultural & Rural Populations: Global Perspectives (SHARP)

October 19-22

Saskatoon, SK, Canada



### UMASH PRESENTERS:

- » **Carrie Klumb, MPH, Minnesota Department of Health**  
Healthy Fairs Workshops: A One Health approach to improving health and safety at county fairs in Minnesota
- » **Iris Reyes, MPH, National Farm Medicine Center**  
Surveillance of Disease and Injury in Wisconsin Dairy Farmers and Workers
- » **Iris Reyes, MPH, National Farm Medicine Center**  
Finding Data, In Data: Mining Terms from Electronic Medical Records for the Characterization of Dairy Worker Populations
- » **Iris Reyes, MPH, National Farm Medicine Center**  
A computer application for clinicians to facilitate the return-to-work of injured agricultural workers
- » **Amy Liebman, MPA, MA, Migrant Clinicians Network and Iris Reyes, MPH, National Farm Medicine Center**  
Migrant workers in agriculture and rural areas – global perspectives and local responses (panel discussion)
- » **Pete Raynor, PhD, University of MN School of Public Health**  
Effects Of Production Practices and Environmental Factors on Air Contaminants in Swine Facilities

## 142nd Annual American Public Health Association (APHA) Meeting and Exposition

November 15-19

New Orleans, Louisiana



### UMASH PRESENTERS:

- » **Amy Liebman, MPA, MA, Migrant Clinicians Network**  
All that we herd: Using qualitative methods to understand language, barriers, and challenges in a changing dairy industry
- » **Scott Sandberg, MPH, National Farm Medicine Center**  
Surveillance of disease and injury in Wisconsin dairy farmers and workers
- » **Casper Bendixsen, PhD, National Farm Medicine Center**  
Clash between agrarian ethics and industrialization
- » **Iris Reyes, MPH, National Farm Medicine Center**  
Facilitating the return-to-work of injured and ill farm workers: An online decoder for clinicians
- » **Patricia Juarez-Carrillo, MPH, PhD, Migrant Clinicians Network**  
Beyond worker training – the role of the community health workers in sustaining safe practices in an occupational setting

## OTHER UPCOMING EVENTS

Learn more and view full event list at [umash.umn.edu/events.html](http://umash.umn.edu/events.html)

## AG SAFETY & HEALTH SPOTLIGHT

Ag Safety and Health

**SPOTLIGHT**

Stories from the Field

### Rabies as an Immigrant Worker Health Issue on the Farm

As the dairy industry modernizes, Hispanic immigrant workers play an increasingly important role. Approximately 50% of the dairy workforce in the United States is made up of immigrant workers, largely from Mexico. There are numerous barriers to addressing the health and safety concerns of this workforce including immigration status, language and cultural differences, lack of insurance and limited formal education. This spotlight story highlights an occupational health hazard of working on a farm and stresses the importance of tackling these barriers to keep immigrant workers safe.

READ THE FULL ARTICLE AT [UMASH.UMN.EDU/SPOTLIGHT](http://UMASH.UMN.EDU/SPOTLIGHT)



UMASH is a collaboration of the University of Minnesota School of Public Health, University of Minnesota College of Veterinary Medicine, the National Farm Medicine Center of the Marshfield Clinic with the Migrant Clinicians Network, and the Minnesota Department of Health. This collaboration brings together unique and complimentary expertise to address existing and emerging occupational health and safety issues in agriculture.

Research • Education • Prevention

